

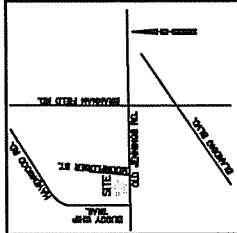
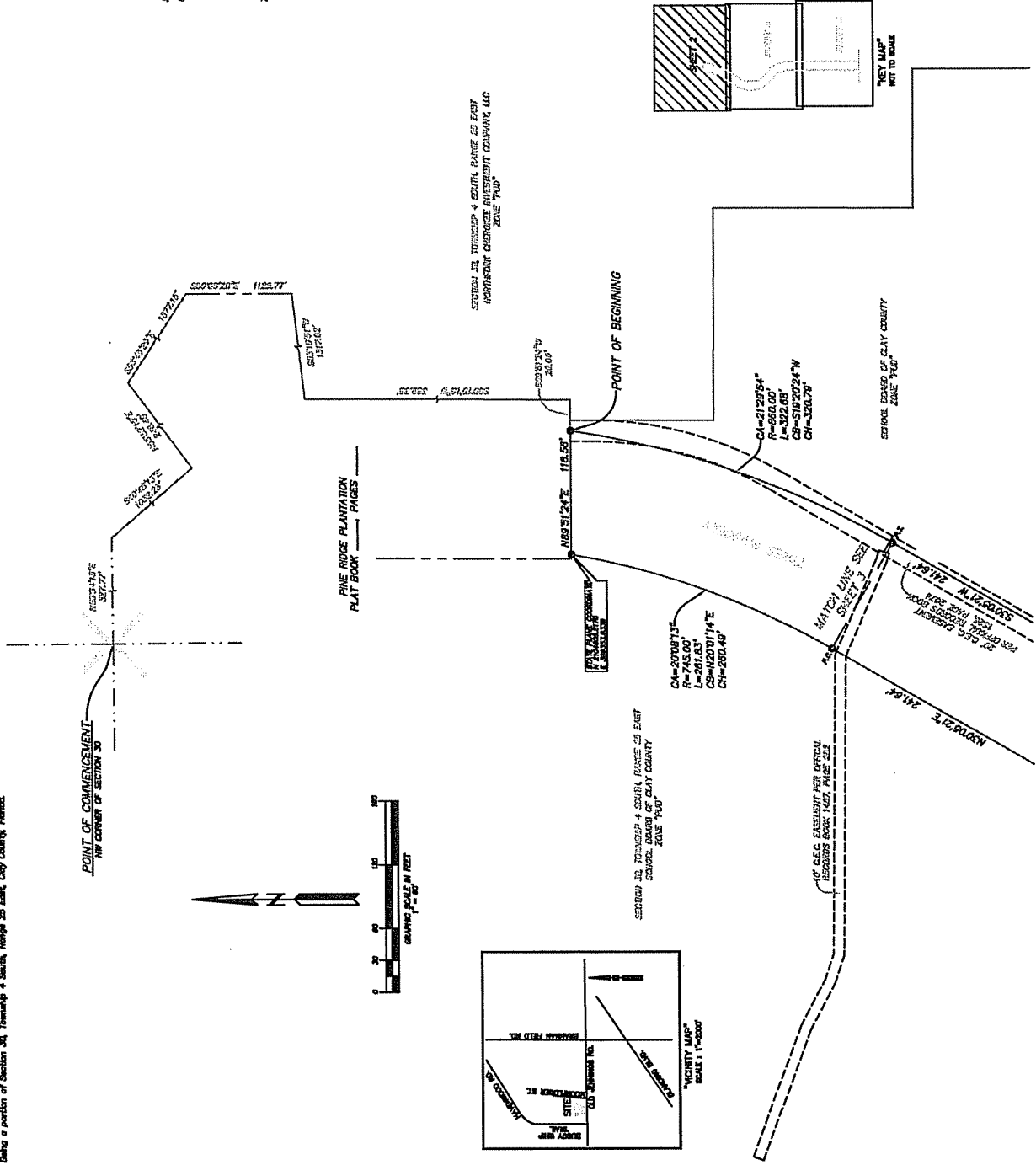
TYNES PARKWAY
Being a portion of Section 34, Township 4 South, Range 25 East, Clay County, Florida.

- NOTES:**
- 1) \odot denotes Permanent Reference Monument S&H P.L.S. No. 3549
 - 2) \bullet denotes Permanent Control Point
 - 3) Bergeles located on the W&W R/R Line of Old Jennings Road at Bergeles South, S&H P.L.S. No. 1041
 - 4) \square along to FEMA. Flood Insurance Risk has dated November 4, 1982. The property shown herein is situated in Zone X.
 - 5) CLEC denotes City Electric Cooperative
 - 6) All plotted utility easements shall also be easements by the instrument creating them. The instrument creating them shall include a provision for the easement to be used for the purposes stated herein. The instrument creating them shall also include a provision for the easement to be used for the purposes stated herein. The instrument creating them shall also include a provision for the easement to be used for the purposes stated herein.
 - 7) All easements for the underground electrical distribution system marked CLEC and shown on plat are hereby irrevocably granted without restriction (subject to City Electric Cooperative, Inc. (CEC)).

NOTICE: This plat as recorded in its graphic form is the official depiction of the established facts described herein and will in no way be construed to be a warranty or representation of any kind, and shall not be relied upon in any way. There may be additional encumbrances that are not recorded on this plat that may be found in the public records of this county.

LEGEND

- Point of Curvature
- P.C.
- Point of Tangency
- P.T.
- Point of Reverse Curvature
- P.R.C.
- Point of Intersection
- P.I.
- Center Point
- C.P.
- Rock
- R
- As
- Asst. Station
- Chord Distance
- Ch
- Radius
- R
- Top of Bank
- T.O.B.
- Match Line



PREPARED BY
WILLIAM A. MAYER & ASSOCIATES, INC.
1000 W. BERRY AVE., SUITE 100
DAYTONA BEACH, FLORIDA 32114
TELEPHONE (407) 255-1238

TYNES PARKWAY
Being a portion of Section 33, Township 4 South, Range 20 East, Clay County, Florida.
REF: SEE CASENO. 98-1013
OFFICIAL RECORDS BOOK PAGE 205 AND 206

SECTION 33, TOWNSHIP 4 SOUTH, RANGE 20 EAST
SCHOOL BOARD OF CLAY COUNTY
ZONED "PUB"

SECTION 33, TOWNSHIP 4 SOUTH, RANGE 20 EAST
SCHOOL BOARD OF CLAY COUNTY
ZONED "PUB"

SECTION 33, TOWNSHIP 4 SOUTH, RANGE 20 EAST
SCHOOL BOARD OF CLAY COUNTY
ZONED "PUB"

SECTION 33, TOWNSHIP 4 SOUTH, RANGE 20 EAST
SCHOOL BOARD OF CLAY COUNTY
ZONED "PUB"

SECTION 33, TOWNSHIP 4 SOUTH, RANGE 20 EAST
SCHOOL BOARD OF CLAY COUNTY
ZONED "PUB"

SECTION 33, TOWNSHIP 4 SOUTH, RANGE 20 EAST
SCHOOL BOARD OF CLAY COUNTY
ZONED "PUB"

SECTION 33, TOWNSHIP 4 SOUTH, RANGE 20 EAST
SCHOOL BOARD OF CLAY COUNTY
ZONED "PUB"

SECTION 33, TOWNSHIP 4 SOUTH, RANGE 20 EAST
SCHOOL BOARD OF CLAY COUNTY
ZONED "PUB"

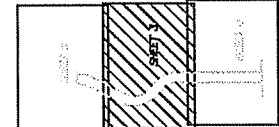
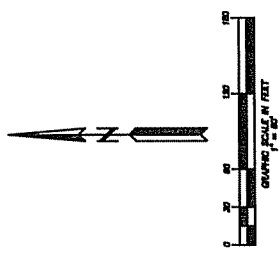
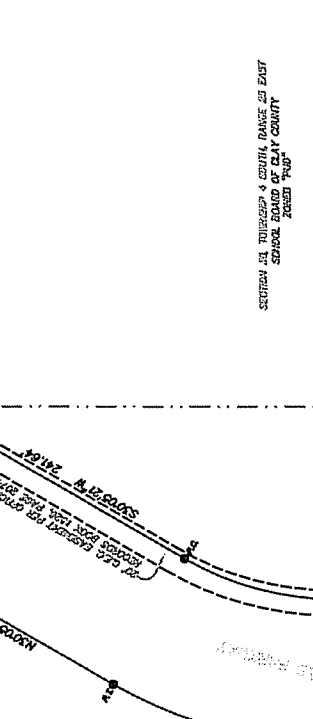
SECTION 33, TOWNSHIP 4 SOUTH, RANGE 20 EAST
SCHOOL BOARD OF CLAY COUNTY
ZONED "PUB"

SECTION 33, TOWNSHIP 4 SOUTH, RANGE 20 EAST
SCHOOL BOARD OF CLAY COUNTY
ZONED "PUB"

SECTION 33, TOWNSHIP 4 SOUTH, RANGE 20 EAST
SCHOOL BOARD OF CLAY COUNTY
ZONED "PUB"

SECTION 33, TOWNSHIP 4 SOUTH, RANGE 20 EAST
SCHOOL BOARD OF CLAY COUNTY
ZONED "PUB"

SECTION 33, TOWNSHIP 4 SOUTH, RANGE 20 EAST
SCHOOL BOARD OF CLAY COUNTY
ZONED "PUB"



PREPARED BY: JEFFREY A. ASHCROFT & ASSOCIATES, INC.
REGISTERED PROFESSIONAL LAND SURVEYOR
FLORIDA LICENSE NO. 13679
1001 W. BERRY AVE., SUITE 400
MARIETTA, GA 30066
PHONE: (770) 273-1229

SECTION 33, TOWNSHIP 4 SOUTH, RANGE 20 EAST
SCHOOL BOARD OF CLAY COUNTY
ZONED "PUB"

SECTION 33, TOWNSHIP 4 SOUTH, RANGE 20 EAST
SCHOOL BOARD OF CLAY COUNTY
ZONED "PUB"

SECTION 33, TOWNSHIP 4 SOUTH, RANGE 20 EAST
SCHOOL BOARD OF CLAY COUNTY
ZONED "PUB"

SECTION 33, TOWNSHIP 4 SOUTH, RANGE 20 EAST
SCHOOL BOARD OF CLAY COUNTY
ZONED "PUB"

SECTION 33, TOWNSHIP 4 SOUTH, RANGE 20 EAST
SCHOOL BOARD OF CLAY COUNTY
ZONED "PUB"

SECTION 33, TOWNSHIP 4 SOUTH, RANGE 20 EAST
SCHOOL BOARD OF CLAY COUNTY
ZONED "PUB"

SECTION 33, TOWNSHIP 4 SOUTH, RANGE 20 EAST
SCHOOL BOARD OF CLAY COUNTY
ZONED "PUB"

TYNES PARKWAY
Being a portion of Section 34, Township 4 South, Range 25 East, Clay County, Florida

MATCH LINE SEE SHEET 3

JACKIE L. B. LANGRISH & FRED ZIGED "PUD"

JERRY A. B. RAYNE DAVIS ZIGED "PUD"

TROY A. DAVIS ZIGED "PUD"

55' EASEMENT FOR WALKWAY, DRIVEWAY, & UTILITIES

20' E.C. EASEMENT PER OFFICIAL RECORDS BOOK 1824, PAGE 2074

500'±515'±W 115500'

SECTION 34, TOWNSHIP 4 SOUTH, RANGE 25 EAST
HARTWICK CHARGES SUBSECT COLEMAN, LLC
STATE "PUD"

OFFICIAL RECORDS BOOK
1824, PAGE 213

KEY MAP
NOT TO SCALE

GRAPHIC SCALE IN FEET
1" = 20'

PROVIDED BY MILLER & ASSOCIATES, INC.
10000 W. UNIVERSITY BLVD., SUITE 100
FORT LAUDERDALE, FL 33324
TEL: (954) 473-1000
FAX: (954) 473-1001
WWW.MILLERANDASSOCIATES.COM